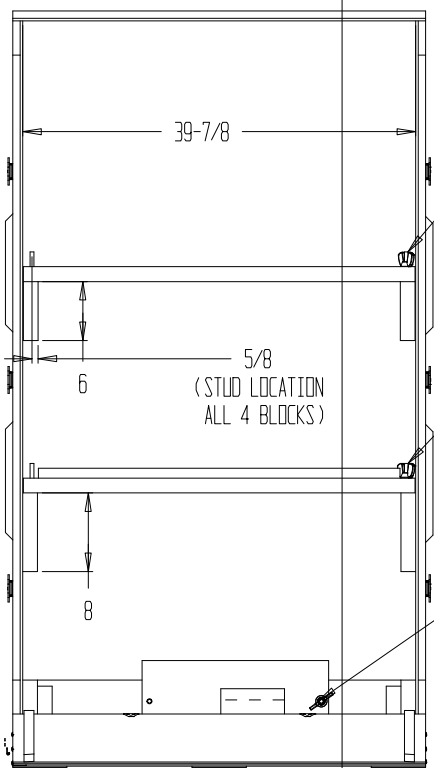


REVISIONS			
REV	DESCRIPTION	DATE	APPROVED
E	SEE SHEET 1 OF 3	1-7-20	RAR

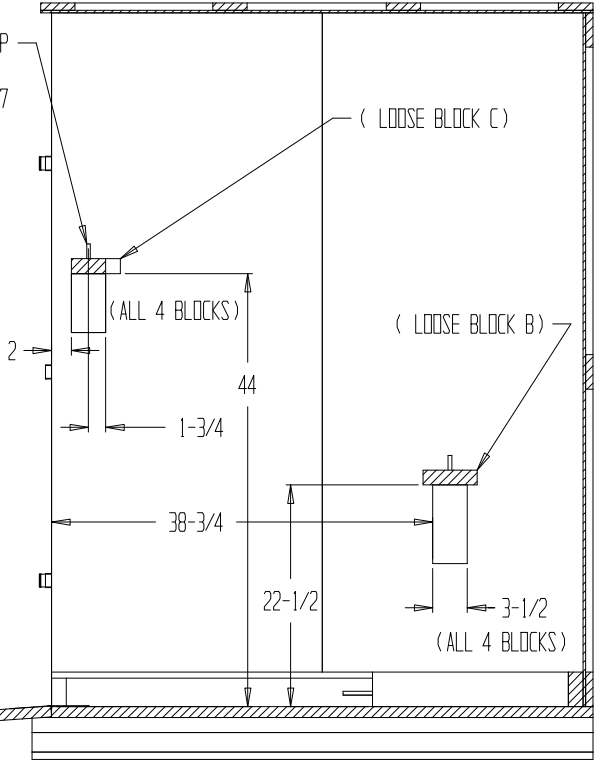


ATTACH LOOSE BLOCK C WITH 2 WING NUTS 3/8-16 EQUIV TO MCMASTER CARR 92001A344 AND WASHER/LOCKWASHERS NOTED BELOW

ATTACH LOOSE BLOCK C WITH 2 WING NUTS 3/8-16 EQUIV TO MCMASTER CARR 92001A344 AND WASHER/LOCKWASHERS NOTED BELOW

ATTACH LOOSE BLOCK C WITH 2 WING NUTS 3/8-16 EQUIV TO MCMASTER CARR 92001A344 AND WASHER/LOCKWASHERS NOTED BELOW

INSTALL LAG-STUD 3" DEEP IN LOCATION SHOWN MCMASTER CARR 90207A317 OR EQUIV 4X



SECTION A-A

- NOTE: ADD WASHERS UNDER WING NUTS:
- 3/8 LOCK WASHER EQUIV TO MCMASTER CARR 91102A760
 - 3/8 X 7/8 FLAT WASHER SIMILAR TO MCMASTER 92141A031

DIMENSIONS ARE IN INCHES FRACTIONAL ± 1/8 XX ± .13 XXX ± .125

Roos Instruments

CRATE CASSINI 16

THIRD ANGLE PROJECTION RI P/N W1MFFHHE