



Creating a Fixture Calibration Executive - Cassini

Fixture Calibration Executives do two things.

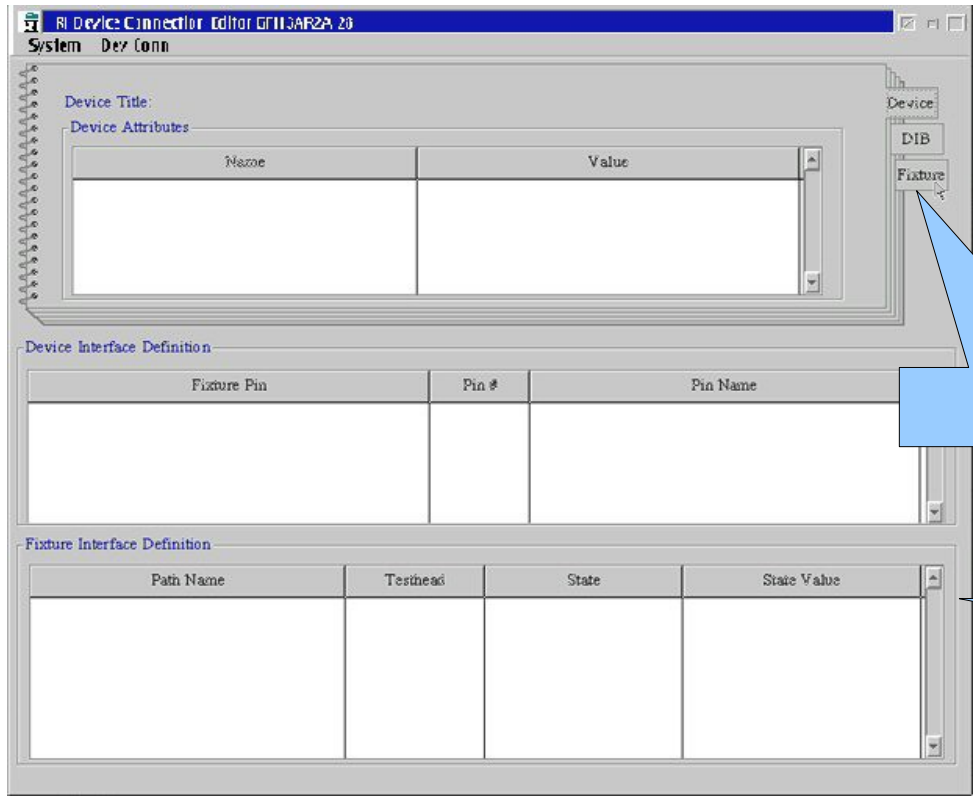
- Provide an area to list all required calibration plans for a fixture.
- Provide an order of succession for required test plans.



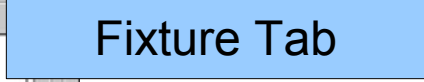
Steps for Creating₁

- Open the Device Connection Editor

- To do this go to the upper right hand corner of the screen and choose "Apps" from the screen side menu. An application window will pop up.
- Select "Device Connection Editor" button and the device editor window will open.



- Select the "Fixture" tab to load the desired fixture definition.





Steps for Creating₂

- Load the Desired Fixture Definition
 - After choosing the “Fixture” tab, highlight from the listing window the fixture that will have the calibration plans listed and select OK at the bottom of the window.

The screenshot shows two overlapping windows from the RI software. The top window is titled "Fixture Selection" and contains a table with the following data:

Title	Fixture Family	Device Family
SE_Cassini_XX	SE_Cassini_XX	all
SE_Cassini_XX	SE_Cassini_XX	all
Student Exercise	Students	all
TDK_EFEM_S1	TDK_EFEM_S1	TD
TDK_EFEM_S1_Master	TDK_EFEM_S1	TD

The bottom window is the "RI Device Connection Editor" for device "GFH3AR2A 29". The "Dev Conn" menu is open, showing the following options:

- New Fixture...
- Load Fixture...
- Unload Fixture
- Unload All
- Edit Paragraph...
- Edit Device Pins...
- Edit Modules...
- Edit Instruments...
- Edit Default Cal...
- Edit Cal List...**
- Edit Cal Symbol...
- Save Fixture
- Save Fixture As...
- Save All

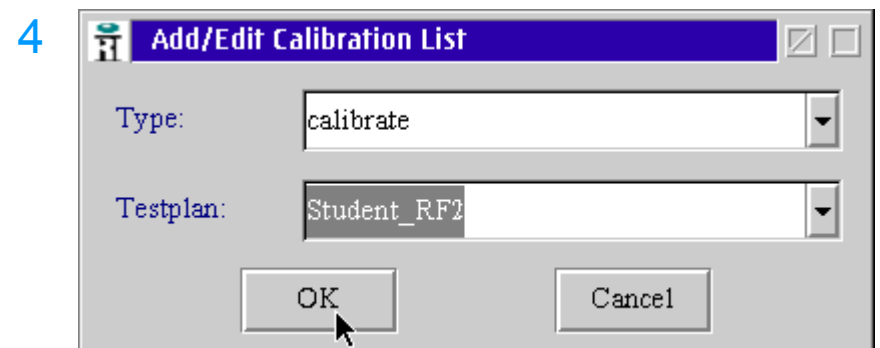
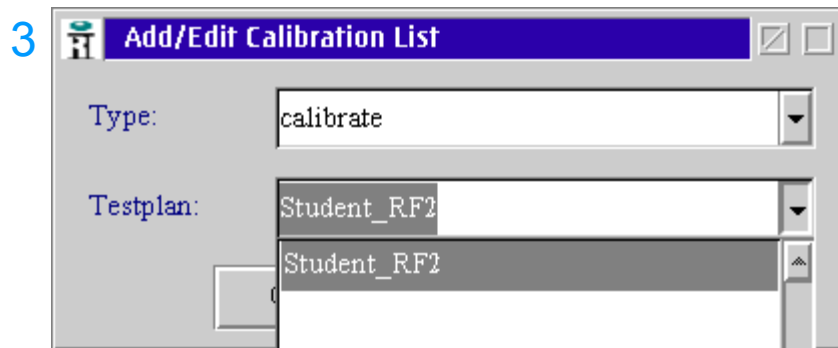
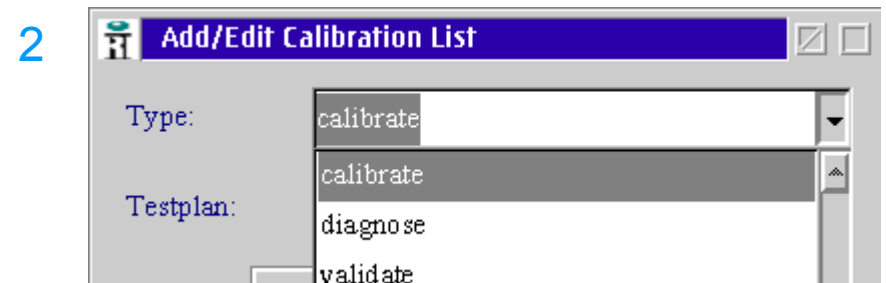
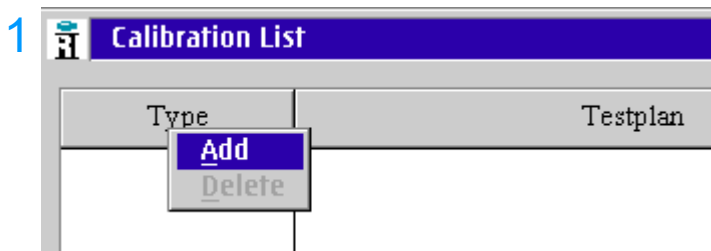
- After the Device Connection Editor loads, choose “Edit Cal List” from the pull down menu.



Steps for Creating₃

- Adding Calibration Plans

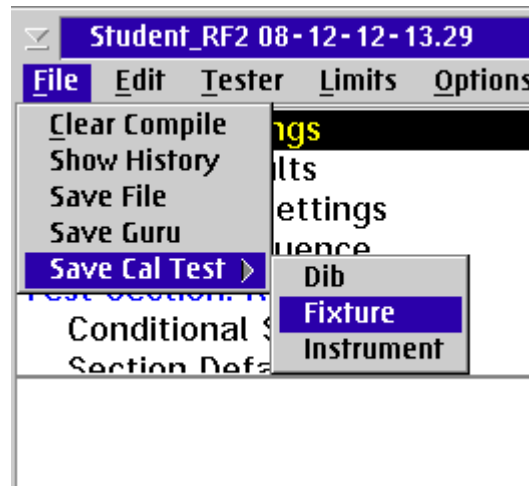
- 1 In the “Calibration List” window do a RMBC in the clear area and choose “Add”.
- 2 Select “Calibrate” for the type of test plan.
- 3 Select the calibration test plan name from the test plan list.
- 4 Select “OK” at the bottom of the window when you have added all the test plans.





Notes

- In order to have a Calibration plan listed in the calibration list they must be saved as a calibration plan and the fixture family needs to be selected in the file save process.



Note: in order for verify/validate test plans to display results the limits in the test plan need to be named "Systemcheck".

