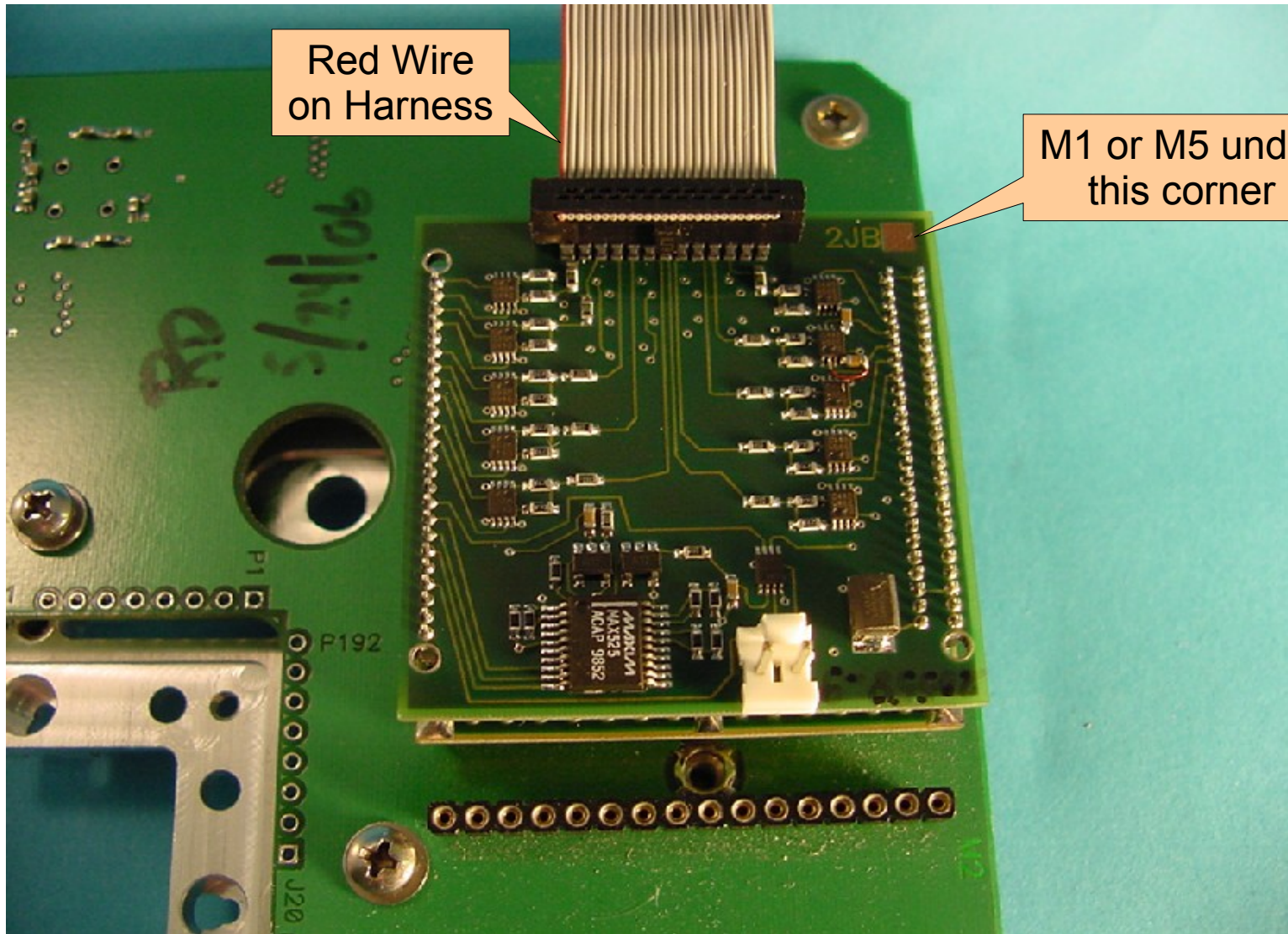




Module Installation RIK00017A High Speed Digital



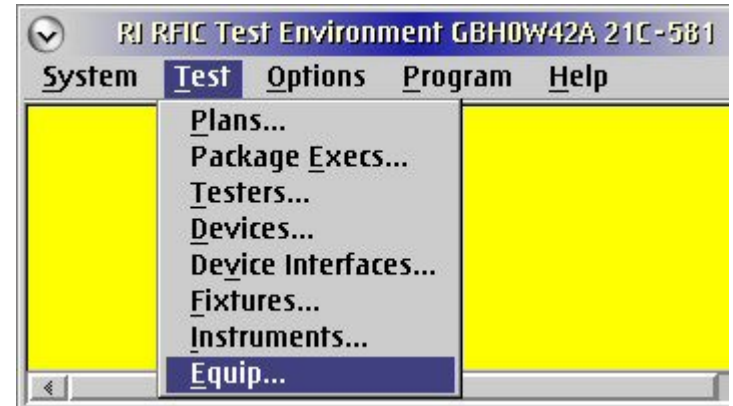
Red Wire
on Harness

M1 or M5 under
this corner



Configuring the RIK00017A High Speed Digital Module

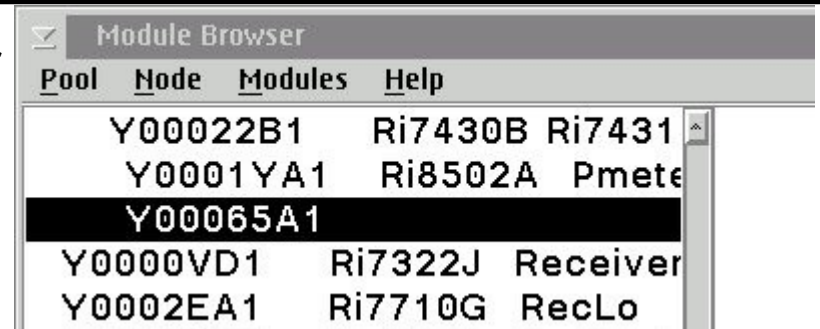
1. Perform a system startup and confirm that the fixture is automatically activated.
2. Go to the main Test Environment Window and select “Test” and from the pull down menu “Equip...”.
3. When the Equipment Pool window opens, select “Control Modules”
A “Module Browser” window will open.



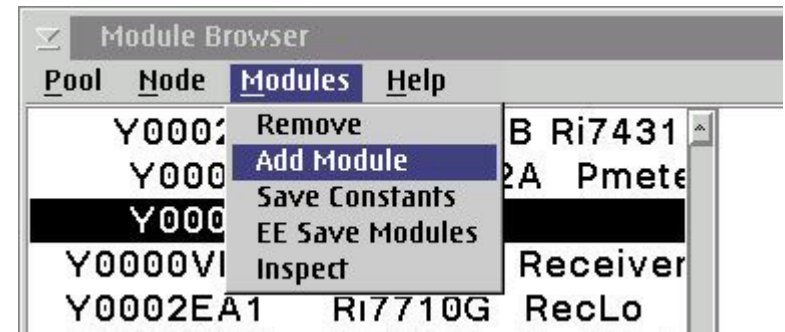


Adding the Module

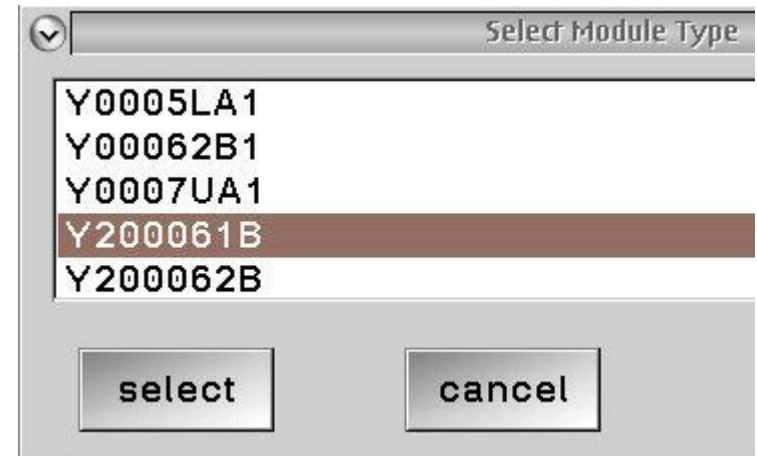
4. Scroll down the listing in the Module Browser and highlight “Y00065A1”.



5. Next go to the “Modules” selection on the main menu of this window and select “Add Module”.



6. A selection window will pop up. Select “Y200061B” and then “Select”.

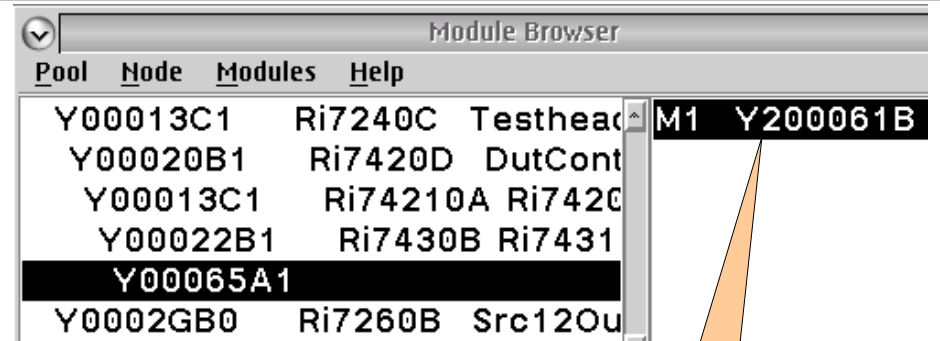




Adding the Module

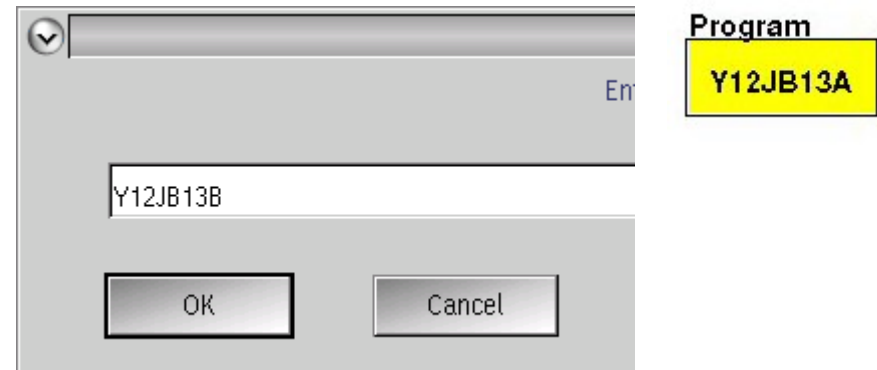
Changing The Program

7. You will be prompted to provide the module location. Change the default location to “M5” if you are using the module in the M5 position. Leave it in the default state if you are using the M1 location on the carrier then select “OK” from the prompt.



Highlight

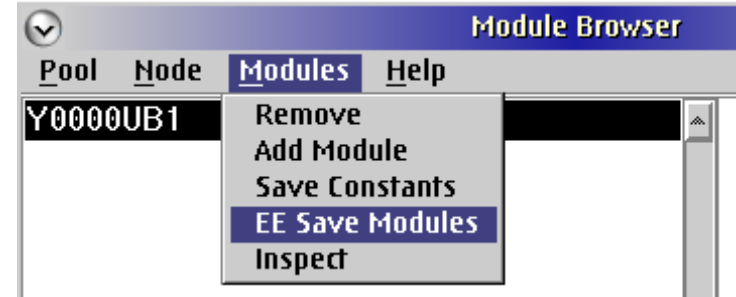
8. **Highlight** the “M1 Y200061B” that will appear in the right hand column of the window. Several buttons will appear in the bottom half. Find the one named “Program”. RMBC on this button and change the program name to be “Y12JB13B” from “Y12JB13A” and select “OK”.



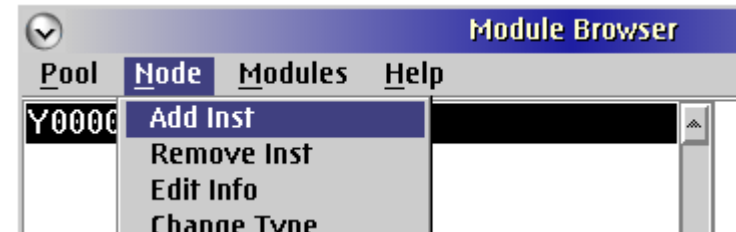


Saving The Module Adding the Instrument

9. **Highlight** “Y00065A1” and “M1 Y200061B” in the Module Browser. Go to the Module Browser main menu and select “EE Save Modules”. Answer “Yes” to the prompt.

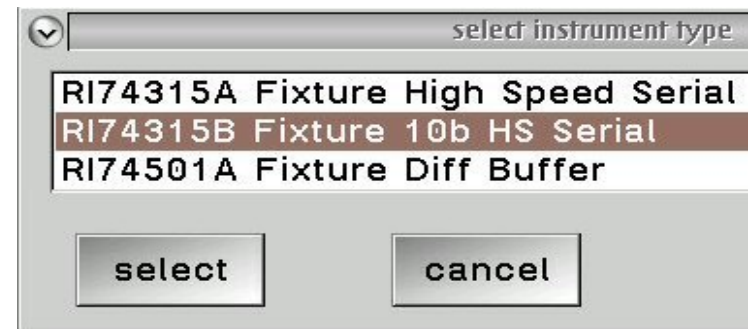


10. **Highlight** “Y00065A1” and “M1 Y200061B” in the Module Browser.



11. Go to the Module Browser main menu and select “Node” and then “Add Inst”.

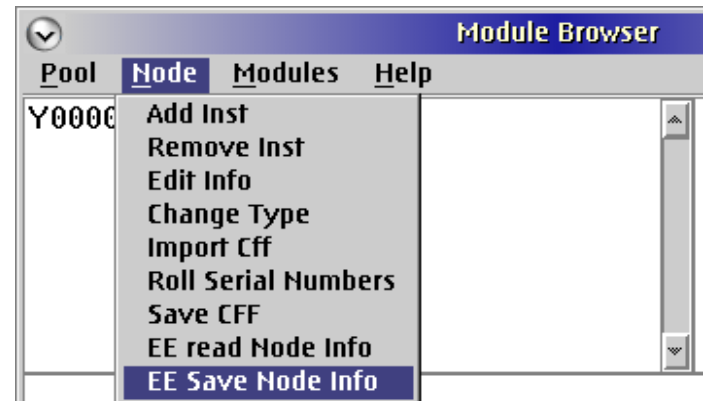
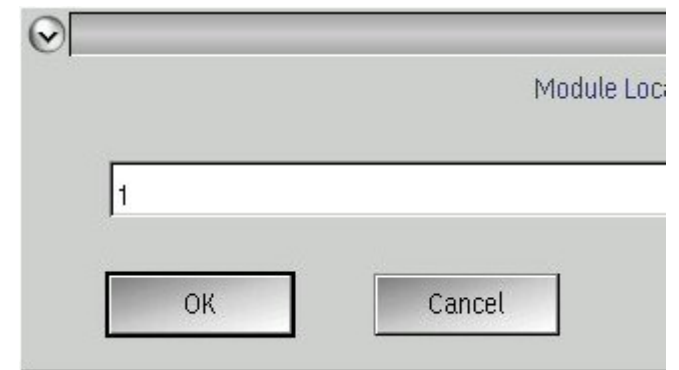
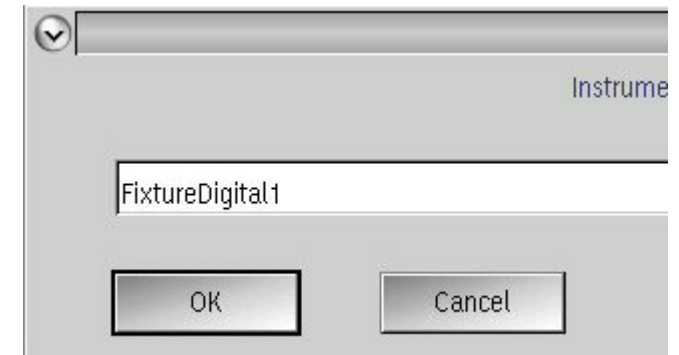
12. Select “RI74315B” and then “select”.





Adding the Instrument

12. When prompted for the “Instrument Name” choose “OK”. This will allow the default “FixtureDigital1” to be entered.
13. You will then be prompted to enter the “Module Location Integer”. Enter 1 for M1 or 5 for M5 and select “OK”
14. **Highlight** “Y00065A1” and “M1 Y200061B” in the Module Browser.
15. Go to the Module Browser main menu and select “Node” and then “EE Save Node Info” from the pull down menu. Respond “Yes” to the prompt.





Checking The Changes

15. Close the Module Browser and the equipment pool windows and then perform a system startup.

Carrier and Instrument Number

16. Deactivate the fixture and perform a system startup. Return to the Module Browser window and observe to see if the full configuration has been saved.

The screenshot shows the 'Module Browser' window with a table of modules and configuration parameters. The table has columns for Pool, Node, and Modules. The selected row is Y00065A1, Ri74315B. The configuration parameters are:

Parameter	Value
Vcmp	4.0
Mode	stop
Clock Frequency	50000000.0
Vhi	0.0
Vlo	0.0

On the right side of the window, there is a 'Program' section with the following values:

Field	Value
Program	Y12JB13B
Location	M1
Name	M1

Module and Location

Program Name

Location/Name are equal